

PASTURE RENOVATION

SHORT TERM

PASTURE RENOVATION

Short Term

ITALIAN RYEGRASS



ITALIAN RYEGRASS (TET)



HYBRID RYEGRASS (TET)



- This mixture will really “pep up” your pasture and give it a new lease of life
- Best cut for silage or hay but will also give useful aftermath grazing
- Designed to perform for 12–18 months after sowing



Pasture Renovation Guide

If you are planning a pasture renovation programme then you need to ensure that you have a copy of this very informative technical guide.

It provides information on a number of aspects including:

- Advice on assessing your own pastures
- The correct preparatory work
- Advice on the correct mixture to use
- The types of drill available and the techniques involved
- Post drilling management



The Complete Guide to Successful Pasture Renovation

You can obtain a hard copy of this guide by telephoning us (on 01472 371471) or alternatively if you e-mail us we can supply you with a pdf file which you can download and then keep the file in your computer for future reference.

PASTURE RENOVATION

Long Term

MID SEASON
PERENNIAL
RYEGRASS (TET)



LATE
PERENNIAL
RYEGRASS (TET)



WHITE CLOVER
BLEND



- A longer term solution to pasture renovation
- White Clover will fix free nitrogen to feed your ley and provide nutritional benefits to your livestock
- All the grasses are larger seeded tetraploids which compete better in the existing swards and improve both yields and forage quality

PASTURE RENOVATION

Long Term (without clover)

MID SEASON
PERENNIAL
RYEGRASS (TET)



LATE
PERENNIAL
RYEGRASS (TET)



- This mixture is basically the same as the above but excludes clover on the assumption that there is sufficient clover in the existing sward

Clover Blend Technology

Sinclair McGill pioneered the development of clover blends in the 1980's in association with IGER. Certain principles were established that are still valid today but the varieties we now use are far superior.

White Clover Blends

CloverPlus

This blend is designed for inclusion in ley mixtures designed for beef and dairy systems. It includes varieties with a range of leaf sizes that can adapt to grazing with cattle and cutting for silage.

Cheviot

A specialist blend primarily made up of very small leaved varieties with excellent persistence to stand up to the rigours of intensive and close grazing by sheep. As sheep are selective grazers it also includes some clover with large leaves which act as a "decoy" during the establishment phase.

Tweed

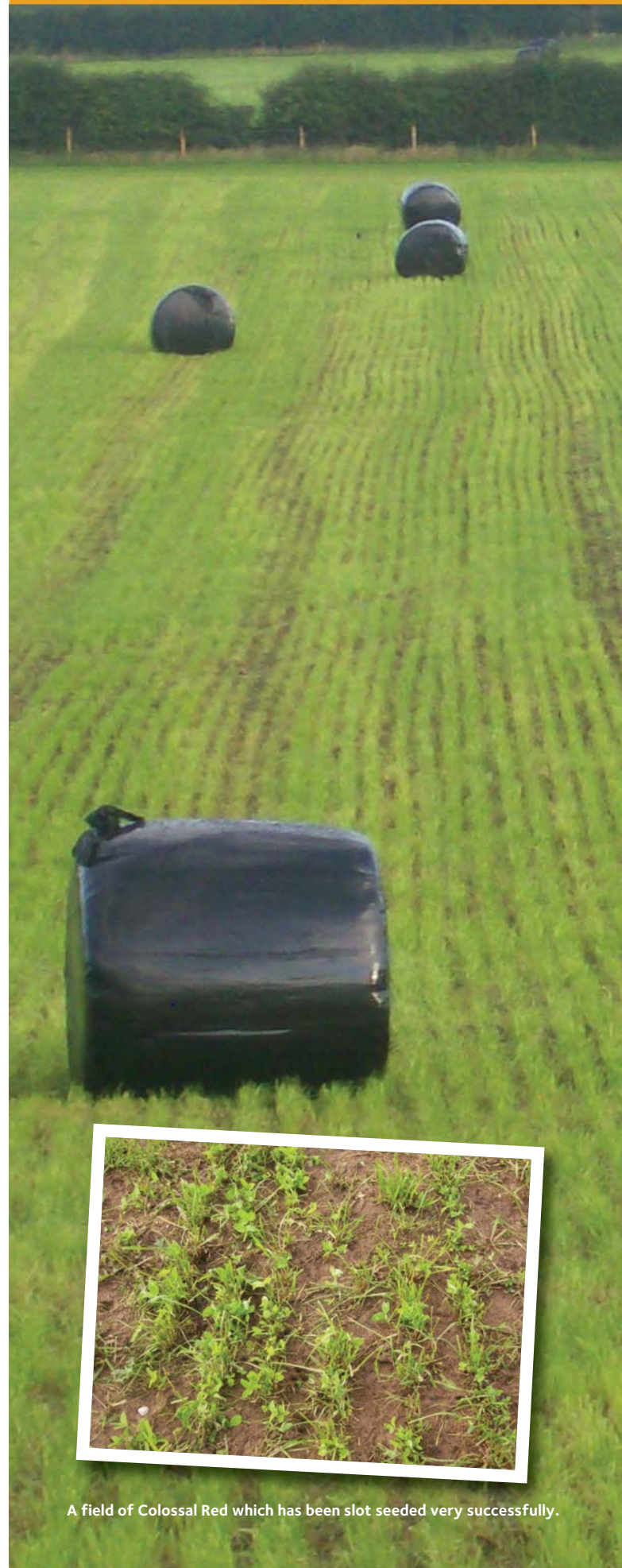
A highly adaptable and persistent blend, for inclusion in long term mixtures. The range of leaf sizes enables Tweed to adapt to suit all classes of livestock and most management systems.

CloverPlus Pelleted White Clover Blend

- Ideal for introducing clover into existing grass swards.
- Pellet increases the size and weight of the seed enabling easier drill adjustment and more accurate distribution.
- Treated with HEADSTART® a biological treatment proven to speed up germination and improve establishment.
- Pellet improves seed flow for more even distribution when broadcast.
- Suitable for broadcasting, harrows with a seed box and slot seeding.

PASTURE RENOVATION

LONG TERM



A field of Colossal Red which has been slot seeded very successfully.